



<https://www.pxlcarpets.fr>

PXL CARPETS PRODUCTS 2021

Edition 04

USE CASES



	Event Carpet		Permanent Carpet			High end & Luxury Carpet		
	C400	C600	C600AB	C1000AB	C1200AB	C1100	C1300	C1700
Events	■	■	■	■	■	■	■	■
Shows	■	■	■	■	■	■	■	■
Inaugurations	■	■	■	■	■	■	■	■
Long duration Events		■	■	■	■	■	■	■
Interior Design			■	■	■	■	■	■
Interior Architecture				■	■	■	■	■
High end - Luxury						■	■	■



Recommended use case



Possible use case (use case dependant)



Specific use case

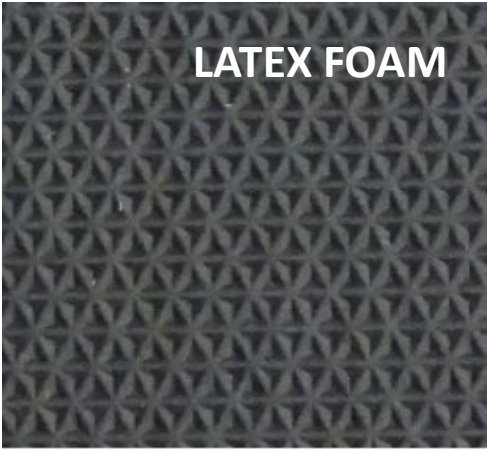
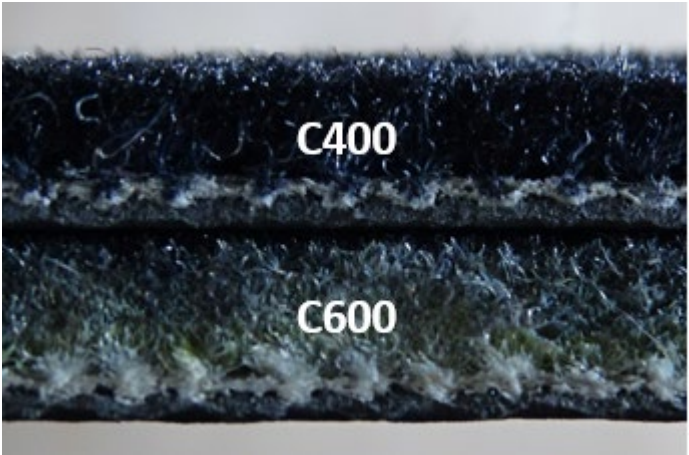
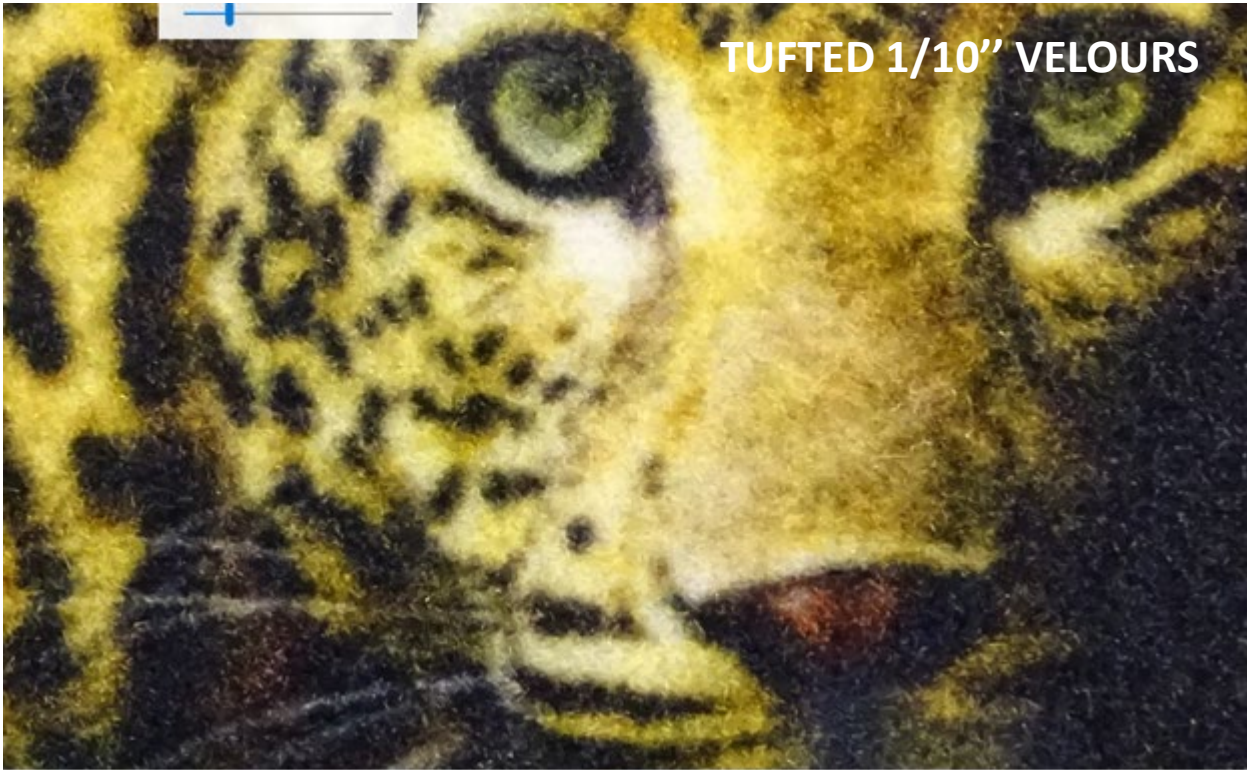
EVENT CARPET 1/4



	C400	C600
Construction	Tufted 1/10" velours	Tufted 1/10" velours
Pile Material	Polyamide 6, BCF	Polyamide 6, BCF
Primary Backing	Polyester non woven	Polyester non Woven
Secondary Backing	High Density Latex 900g/m ²	High Density Latex 900g/m ²
Total Weight g/m ²	1450g	1650g
Pile Weight g/m ²	400g	600g
Pile above Backing g/m ²	282g	472g
Total Height mm	5mm	6mm
Pile Height mm	4mm	5mm
Pile Density g/cm ²	//	0,102
TUFT Density per m ²	177750	286100

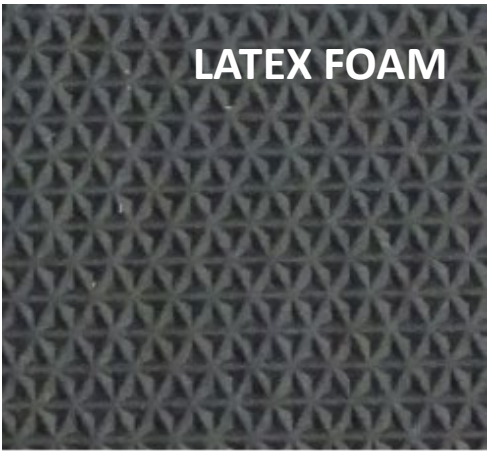
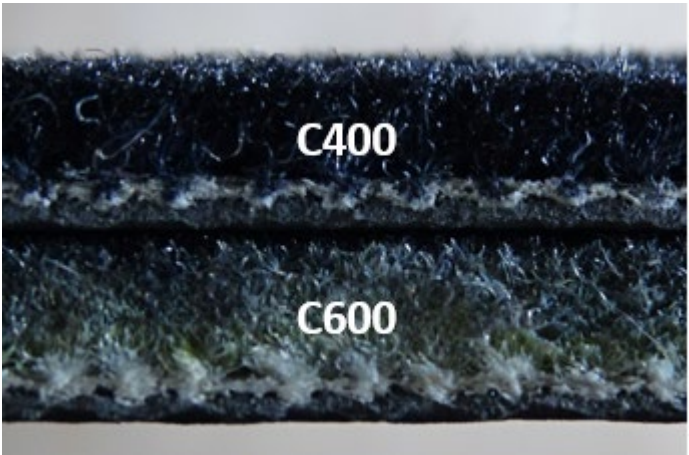


EVENT CARPET 2/4 - C400





EVENT CARPET 3/4 - C600



EVENT CARPET 4/4



	C400	C600
Classification EN1307	//	23/32-LC3
FIRE Resistance EN13501-1	Bfl-s1	Bfl-s1
Fastness to Light ISO 105-B02	>5	>5
Rubbing Fastness	Oekotex 100 4-5	Oekotex 100 4-5
Colour Fastness to Water	Oekotex 100 Décolorer 4-5 Souiller 4	Oekotex 100 Décolorer 4-5 Souiller 4
Thermal Resistance m²K/w ISO 8302	//	//
Impact Noise Rating ISO140-8	25dB	25dB
Sound Absorption ISO354	//	//
Permanent Antistatic ISO 6356		
Transversal Resistance ISO10965		
Size	2ml wide	2ml wide
Dimensional stability EN986	//	//
Wheel chair use EN985	//	//
Nombre of colors	Unlimited	Unlimited

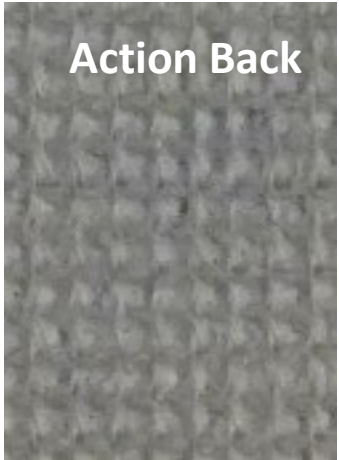
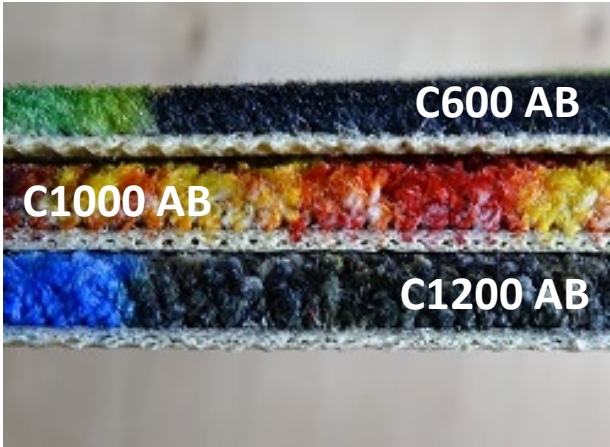
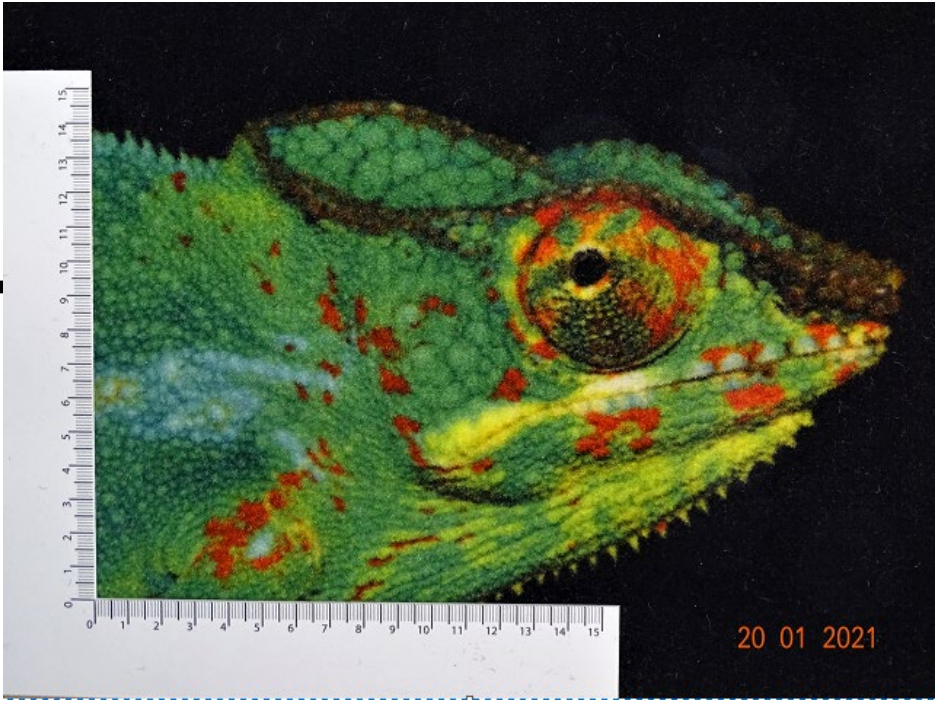
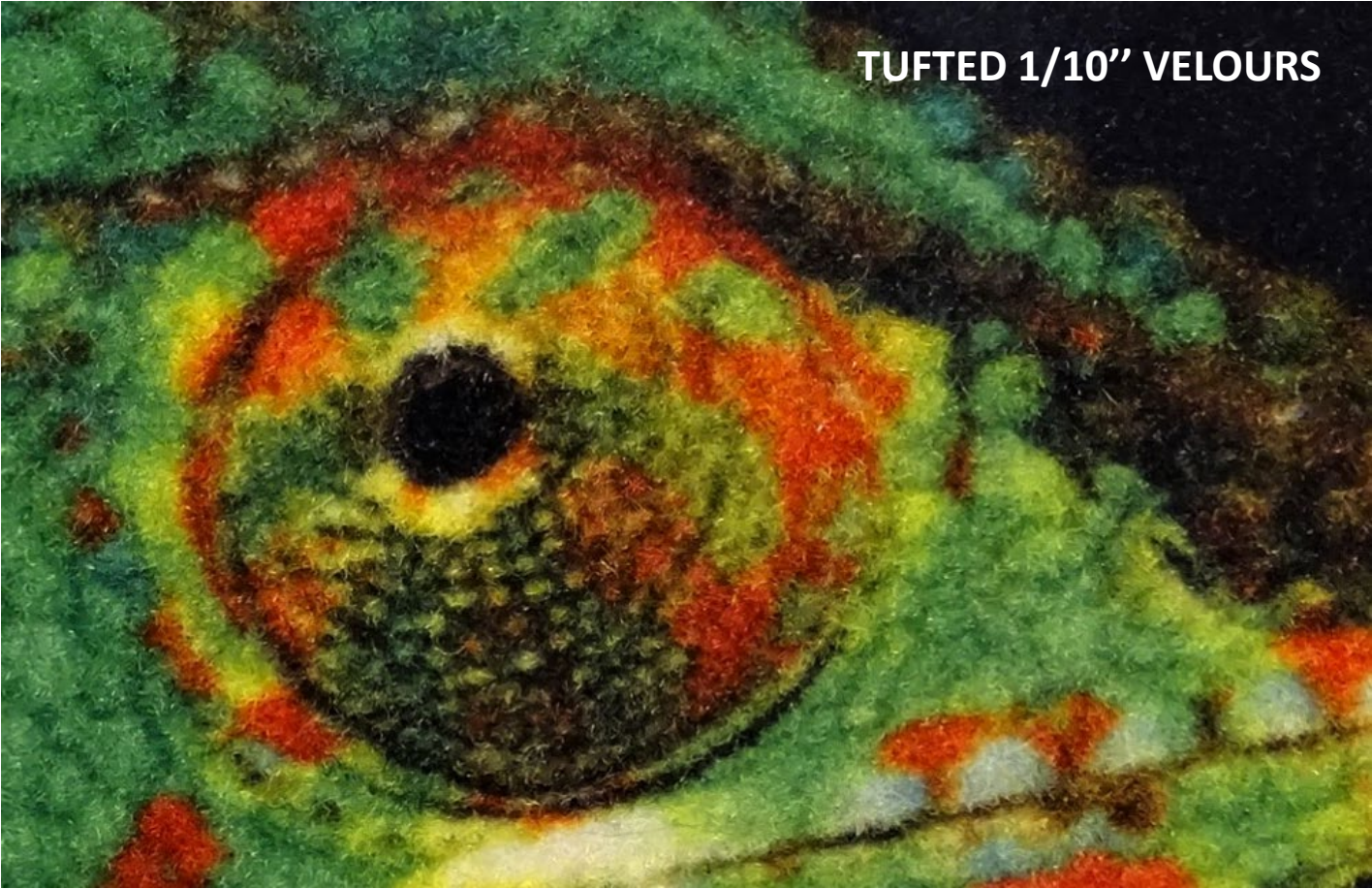
PERMANENT CARPET 1/5



	C600 AB	C1000 AB	C1200 AB
Construction	Tufted 1/10" velours	Tufted 1/10" frisé	Tufted 1/10" frisé
Pile Material	Polyamide 6 BCF	Polyamide 6,6, HS frisé	Polyamide 6,6, HS frisé
Primary Backing	Polyester non woven	Polyester non woven	Polyester non woven
Secondary Backing	Actionback	Actionback	Actionback
Total Weight g/m ²	1700g	2100g	2300g
Pile Weight g/m ²	600g	1000g	1200g
Pile above backing g/m ²	472g	727g	916g
Total Height mm	7mm	8mm	9mm
Pile Height mm	5mm	6mm	7mm
Pile Density g/cm ²	0,102	0,161	0,309
Tuft Density per m ²	286 100	232600	260800

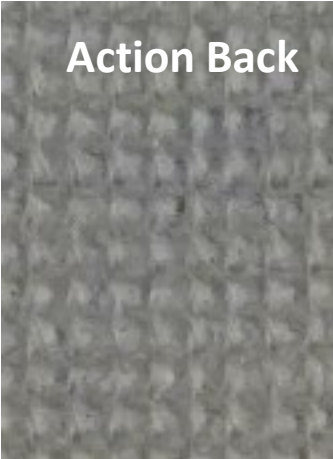
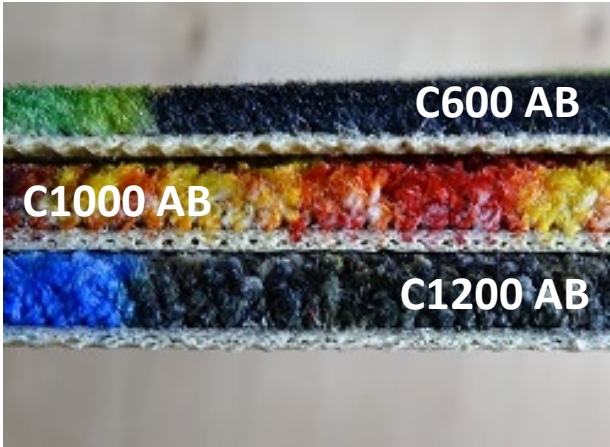
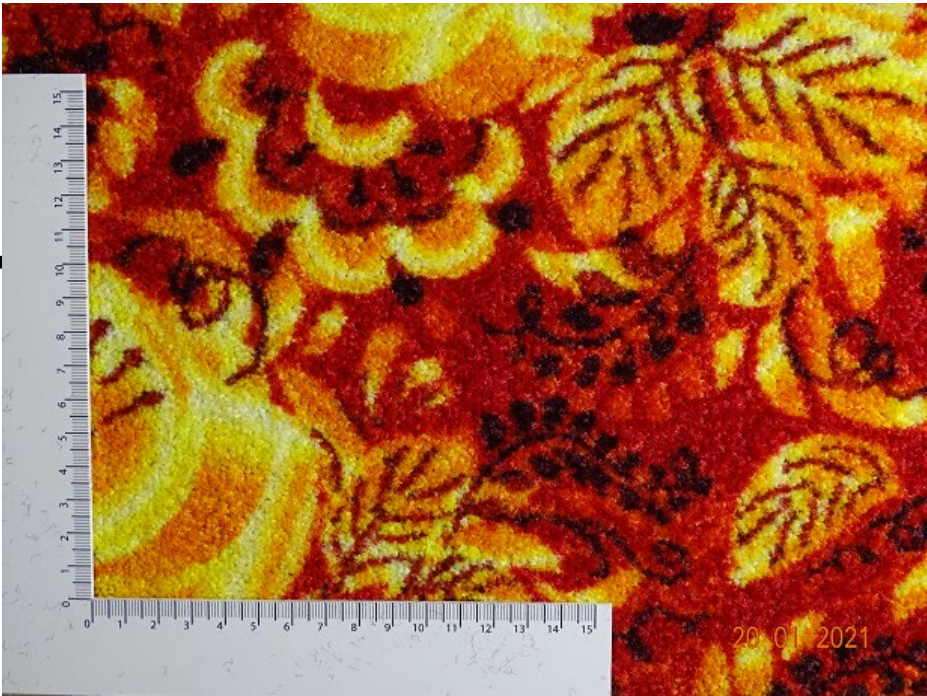
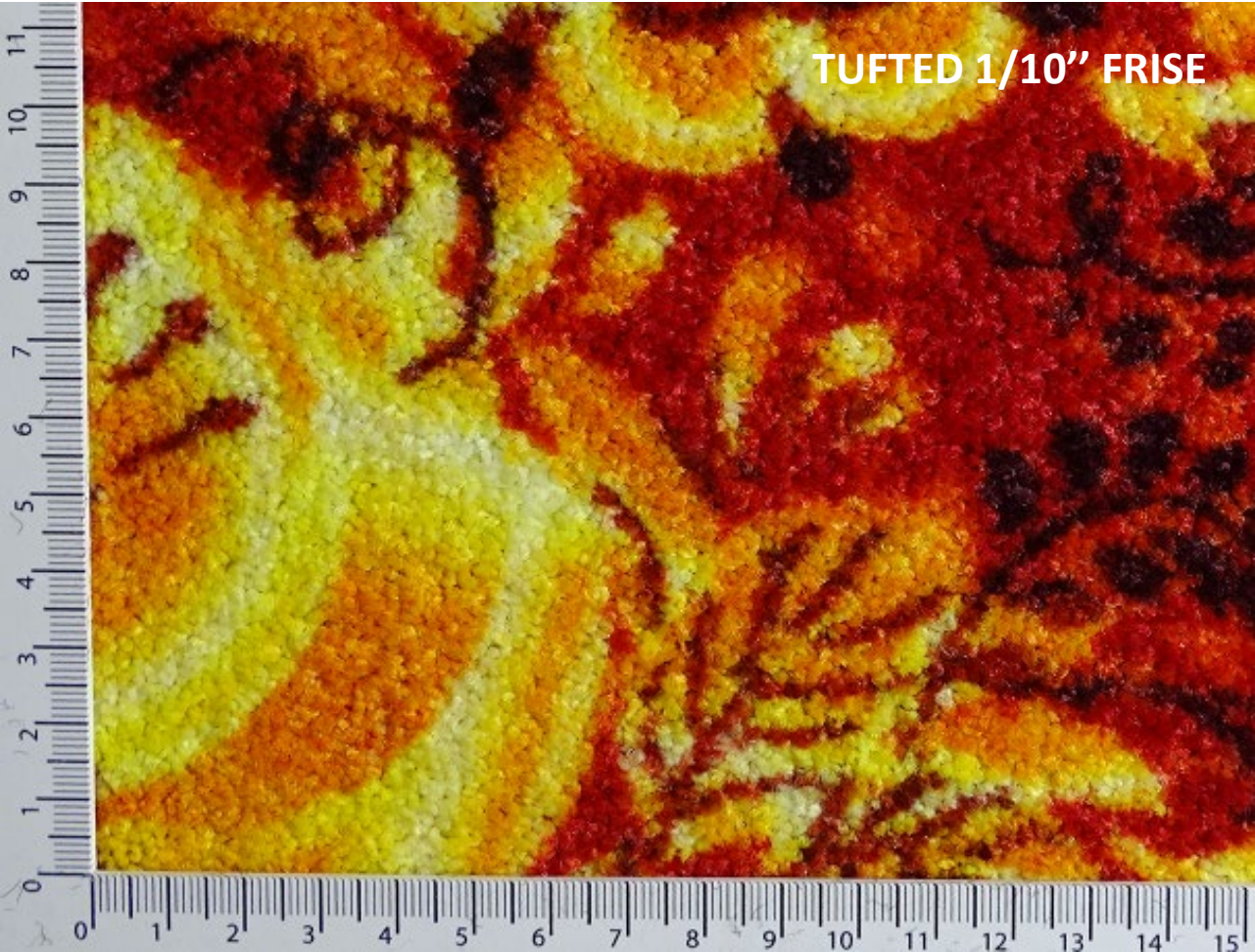


PERMANENT CARPET 2/5 - C600 AB



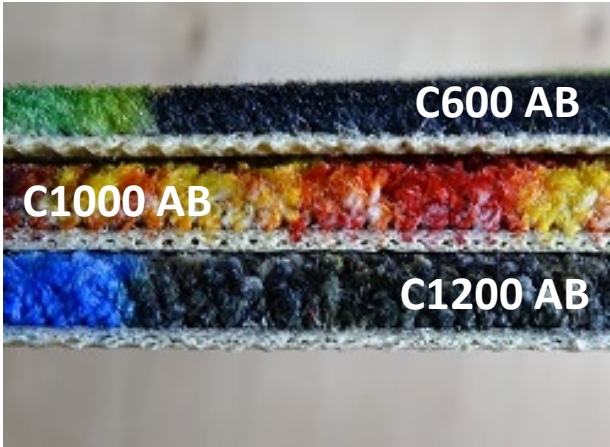


PERMANENT CARPET 3/5 - C1000 AB





PERMANENT CARPET 4/5 - C1200 AB



PERMANENT CARPET 5/5



	C600 AB	C1000 AB	C1200 AB
Classification EN1307	23/32-LC3	23/33LC3	23/33LC3
FIRE Resistance EN13501-1	Bfl-s1	Bfl-s1	Bfl-s1
Fastness to Light ISO 105-B02	>5	>5	>5
Rubbing Fastness	Oekotex 100 4-5	Oekotex 100 -5	Oekotex 100 -5
Colour Fastness to Water	Oekotex 100 Décolorer 4-5 Souiller 4	Oekotex 100 Décolorer 4-5 Souiller 4	Oekotex 100 Décolorer 4-5 Souiller 4
Thermal Resistance m²K/w ISO 8302	//	0,074	0,074
Impact Noise Rating ISO140-8	25dB	27dB	27dB
Sound Absorption ISO354	//	0,15	0,15
Permanent Antistatic ISO 6356	not tested	<2,0kV	<2,0kV
Transversal Resistance ISO10965	//	<10 ⁽¹¹⁾ Ohm	<10 ⁽¹¹⁾ Ohm
Size	2ml wide	2ml wide	2ml wide
Dimensional Stability EN986	//	//	//
Wheel chair use EN985	Intensive Use	Intensive Use	Intensive Use
Number of Colors	Unlimited	Unlimited	Unlimited

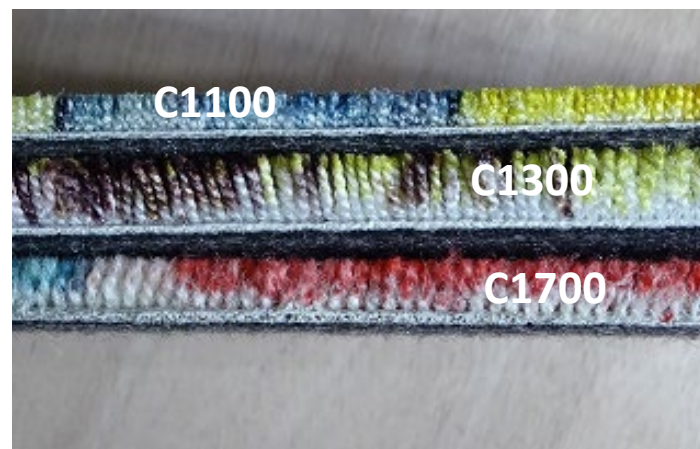
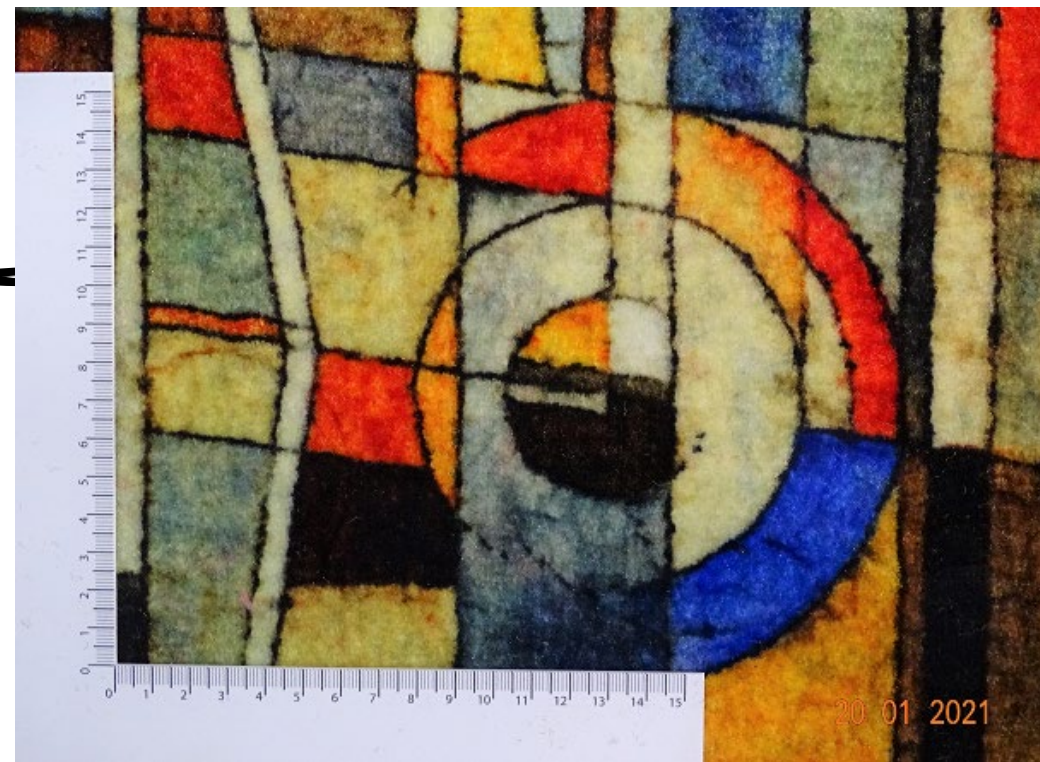
HIGH END & LUXURY CARPET 1/5



	C 1100	C 1300	C 1700
Construction	Tufted 1/10" Shine Velours	Tufted 1/10" Shine Frisé	Tufted 1/8" WOOL
Pile Matériau	Polyamide 6, Aqualon	Polyamide 6, Antron	New Zealand Wool 100%
Primary Backing	Polyester non woven	Polyester non woven	Bonar
Secondary Backing	Felt 100% Polyester 550g/m ²	Felt 100% Polyester 550g/m ²	Felt 100% Polyester 550g/m ²
Total Weight g/m ²	2370g	2370g	3350g
Pile Weight g/m ²	1200g	1200g	1700g
Pile Above Backing g/m ²	1170g	1170g	1150g
Total Height mm	7,5mm	10mm	12mm
Pile Height mm	5,5mm	8mm	8mm
Pile Density g/m ²	//	//	//
Tuft Density per m ²	295 000	210 000	131 750

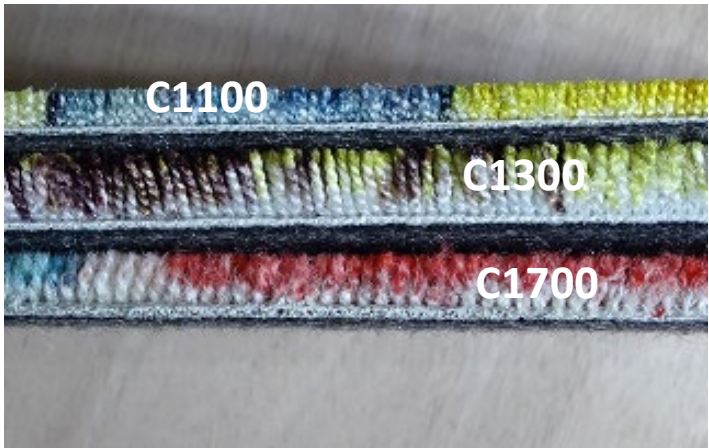


HIGH END & LUX. 2/5 - C1100



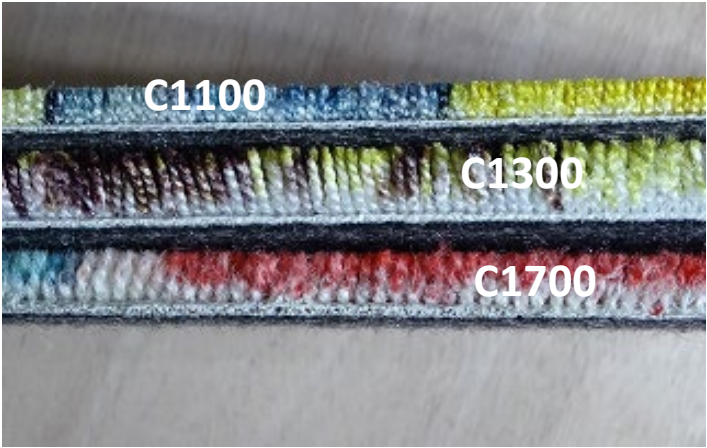


HIGH END & LUX. 3/5 - C1300





HIGH END & LUX. 4/5 - C1700



HIGH END & LUXURY CARPET 5/5



	C 1100	C 1300	C 1700
Classification EN1307	//	//	//
FIRE Resistance EN13501-1	Cfl-s1	Cfl-s1	Bfl-s1
Fastness to Light ISO 105-B02	≥5	≥5	7
Rubbing Fastness EN ISO 105-X12	≥4	≥4	4-5 (dry) 2-3 (wet)
Colour Fastness to Water EN ISO 105-E01	≥4	≥4	Color Change : 4-5 Staining : 3-4
Thermal Resistance m²K/w ISO 8302	0.09m² K/W	0.11m² K/W	//
Impact Noise Rating ISO140-8	27dB	27dB	27dB
Sound Absorption EN ISO 10140	27dB	31dB	//
Permanent Antistatic ISO 6356	not tested	not tested	not tested
Transversal Résistance ISO10965	//	//	//
Size	2ml wide	2ml wide	2ml wide
Dimensional Stability EN986	//	//	//
Wheel chair use EN985	//	//	//
Number of colors	Unlimited	Unlimited	Unlimited

CARPET FINISHING 1/2



Standard mat over-edges

Standard yarn
(only on Event Carpet)



Special mat over-edges

Ribbon



Special mat over-edges

6cm cotton ribbon on the front side



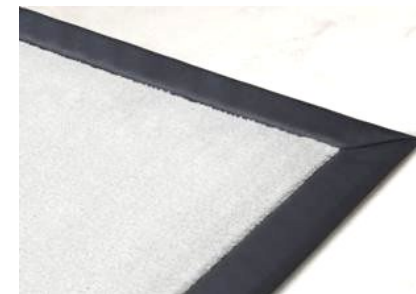
Special mat over-edges

Luxury yarn (only on Permanent Carpet + C1100)



Special mat over-edges

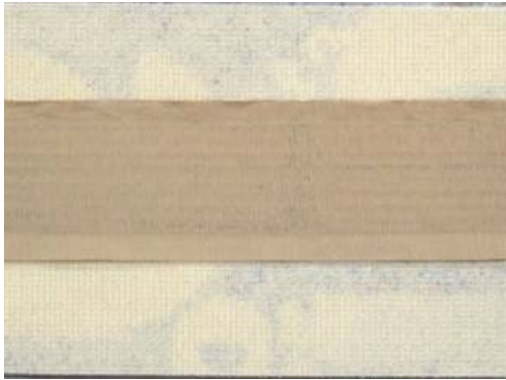
Blind luxury ribbon



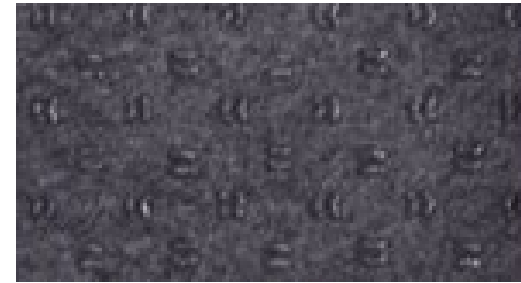
Special mat over-edges

6cm leather ribbon on the front side

CARPET FINISHING 2/2



Welding of carpet



Felt anti-slip under carpet
With or without spots
(not necessary for Event Carpets)



Eyelets

ARTWORK - REQUIREMENTS 1/2



-
- **File formats** : Vector Files : AI, PDF, EPS - Pixelated Files => MIN Resolution : 100 dpi at real size
 - Fonts and images has to be embedded in the file
 - Minimum line thickness (& Character Lines) : 2mm at real size (Velours : C400 C600 C600AB C1100) / 3mm at real size (Frisé : C1000AB C1200AB C1300 C1700)
 - **Colors** : Unlimited. For specific colors, please specify :
 - Reference related to our colour book (different for each quality)
 - Reference related to Pantone Coated colour book Quadri for C1100 & C1300
 - Reference related to Pantone Uncoated colour book Quadri for other carpets

ARTWORK - REQUIREMENTS 2/2



-
- Dimensions :
 - We print on a roll useful width of 200 cm (\pm 2cm) and we always print on this maximum printed width.
 - **Artworks or images have to be provided in one piece**, not several segments that needs to be combined into one.
 - Larger artworks are divided into several parts of 200cm and will be fit together if necessary.
 - Other information, please see the following web page :
 - <https://www.pxlcarpets.com/en/content/technical-data>
 - French : [FICHE-FICHIERS-MOQUETTE-2017.pdf \(pxlcarpets.fr\)](#)



EuroShop Germany 2020

